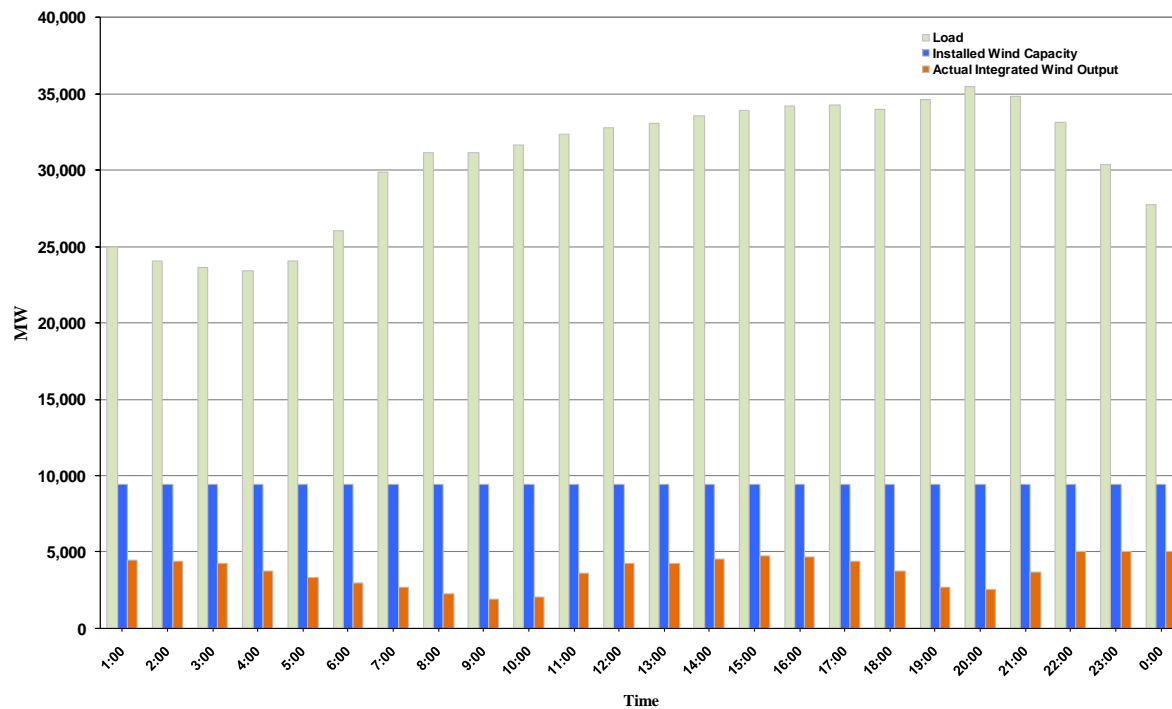




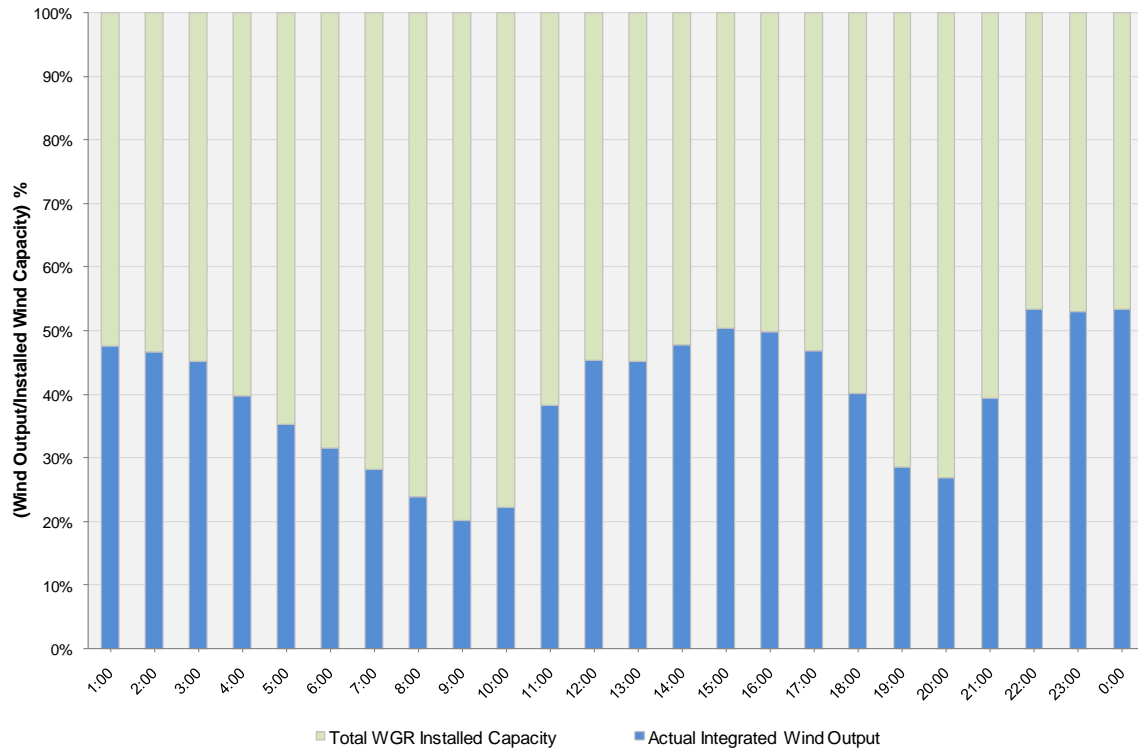
## ERCOT Grid Operations Wind Integration Report: 03/08/11

Peak Load	<b>35,486 MW</b>
Load Peak Hour	<b>20</b>
Wind Record 12/11/10	<b>7,227 MW</b>
Max Wind Value	<b>5,394 MW</b>
Wind Peak Hour	<b>21:47:32</b>
Wind Integration %	<b>16.61</b>

Hourly Average Actual Load vs. Actual Wind Output  
03-08-2011



**Actual Wind Output as a Percentage of the Total Installed Wind Capacity**  
**03-08-2011**



**Actual Wind Output as a Percentage of the ERCOT Load**  
**03-08-2011**

